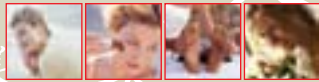


facials and
eye treatments
body wraps and
treatments
aromatherapy
massage
reiki healing
makeup artistry
manicures
gel nails
spa pedicures
eyelash extensions
paraffin
treatments
lash perm / tint
cosmetic tattooing
IPL hair removal
and skin
rejuvenation
electrolysis/
diathermy
airbrush tanning
waxing

Dayside BEAUTY LOUNGE



Spring Specials

**INTRODUCTORY OFFER
FOR LIMITED TIME ONLY
50% off IPLm-Laser Hair
Removal & Skin Rejuvenation**

10% Off all Cosmetic
Tattooing

**TUESDAY & WEDNESDAY
SPECIALS ONLY**

Complimentary Paraffin Hand
Treatment, Exfoliation & Massage
with any 1hr Facial Treatment

Spray Tans \$29

Cat's Eyes Lash Extensions \$55

10% Off Full Set
Gel Nails and Overlays

5/216 MAIN STREET
MORNINGTON
tel. 5975 7019

PPH's Day Oncology Ward Offers More with Support Junction

Since mid-July, Peninsula Private Hospital's Day Oncology Ward has offered more to oncology patients in terms of support. Virginia Howard, Chemotherapy Unit Manager realized that patients needed a source readily available that will give them continuous support, encouragement & hope. From this initial thought and understanding plus Virginia's get-up-and-go, Support Junction was created. Being a vital part of PPH's Day Oncology Ward, Virginia recognized that support groups can be useful at all stages of cancer to all people.

Support Junction is a multidisciplinary team that provides information, education and support to all people who have been touched by cancer. This applies from the patient to extended family, friends and carers. This mix of the cancer care team members with patients gives the group a sense of community. It is the members themselves who offer valued words of encouragement to others from their own experiences. It is the chance to freely express doubts and concerns while coping with their diagnosis and treatments. Support Junction offers opportunities to learn about managing various treatments, living with cancer and adaptation to every day life after cancer.

Currently, Support Junction offers a self help group to all PPH's inpatients and outpatients depending on individual needs. Meetings are on the 3rd Friday of every month at

Peninsula Private Hospital. Support Junction future plans involve creating a wig library as well as having featured speakers at special events. Support Junction will participate as a sponsor of the Mini-Field of Women on behalf of Breast Cancer Network Australia in the month of October.

For further information on Support Junction, please contact either Virginia Howard or Diane Gowing at the Day Oncology Unit at Peninsula Private Hospital, 9788-3737



Peninsula Private Hospital

People caring for people



Radiologist, dietician, social worker, support group.

The latest Oncology treatments are at Peninsula Private.

As the Mornington Peninsula's premier oncology care facility, our central location ensures easy access for all. Our Oncology Ward is open every hour of every day, for whenever you need us.

The nature and level of our care goes far beyond chemotherapy, with radiology, a dietician, a social worker and (depending on treatment) overnight care on site.

Because every cancer diagnosis is different and personal, our compassionate, highly competent staff treat all our patients as unique individuals.

So if you have a battle ahead, come to Peninsula Private for expert yet sensitive care and support. Visit www.ramsayhealth.com.au/pph to learn more.

Together with some of the state's leading specialists, advanced equipment, and experienced staff...**at Peninsula Private we put you first.**

For more information call:

03 9788 3737

**525 McClelland Drive,
Frankston. Victoria 3199**

**PENINSULA PRIVATE
HOSPITAL**